



# Low-E Multi-Purpose Insulation



Garage Ceiling Under  
An Office



Basement Wall  
In-Cavity

High Quality Reflective Insulation For Everyday Use



Cathedral Ceiling



Crawl Space In-Cavity



Under Laminate  
Flooring



Attic Rafter

Save Energy. Save \$\$\$\$. Do More. With Less. Period.

For more information please visit our website at [www.low-e.com](http://www.low-e.com)  
or call 1-800-BUY-LOWE (800-289-5693)

# LOW-E MULTI-PURPOSE INSULATION

## FEATURES & SPECIFICATIONS

- \* Reflects Up To 97% Of Radiant Heat
- \* Excellent Vapor Barrier
- \* Increases Energy Savings
- \* Great For New Construction or Retro-Fit
- \* Installs Easily With A Razor Knife & Foil Tape
- \* For Use in Wall, Rafter, Crawlspace Applications, Under Laminate Flooring And Much More
- \* Insect, Bird, Mold & Mildew Resistant
- \* Can Be Used With Mass Insulation
- \* Sound Deadener
- \* Improves Insulation System Performance
- \* Unique Pre-Crushed Tab Design For Easy Install

### Micro-E Insulation®

PRODUCT CODES: 4LMLT, 4LMLS, 4EMWS, 4LMWS

#### PRODUCT DIMENSIONS & DESCRIPTION:

Double sided scrimmed, scrimmed foil / white foil, scrimless foil / white foil laminated to polyethylene foam (1/8" nominal thickness)

WIDTH: 4', 6'

LENGTH: 125'

EDGINGS AVAILABLE: Trimmed, Staple Fange

R-VALUE: R-10 Down R-6 Up R-7 Horizontal

PERM RATING: ASTM E96 0.008

EMITTANCE: ASTM C1371 0.03

FULL SCALE FIRE TEST: NFPA-286 Passed

### Low-E Insulation

PRODUCT CODES: 4LFLT, 4FLS, 5LFLT, 6LFLT, 6LFLS 4EFWS, 6EFWS

#### PRODUCT DIMENSIONS & DESCRIPTION:

Double sided scrimmed foil, scrimless foil / white foil laminated to polyethylene foam (1/4" nominal thickness)

WIDTH: 4', 5', 6'

LENGTH: 125', 100, 84'

EDGINGS AVAILABLE: Trimmed, Staple Flange

R-VALUE: R-11 Down R-7.55 Up R-7.75 Horizontal

PERM RATING: ASTM E96 0.008

EMITTANCE: ASTM C1371 0.03

FULL SCALE FIRE TEST: NFPA-286 Passed

### Low-E Tab Insulation

PRODUCT CODES: 16LFLC, 18LFLC, 24LFLC

#### PRODUCT DIMENSIONS & DESCRIPTION:

Double sided scrimmed aluminum foil laminated to polyethylene foam (1/4" nominal thickness)

WIDTH: 16", 18", 24"

LENGTH: 125' (16" & 24" widths), 100' (18" width)

EDGINGS AVAILABLE: Trimmed

R-VALUE: R-11 Down R-7.55 Up R-7.75 Horizontal

PERM RATING: ASTM E96 .008

EMITTANCE: ASTM C1371 0.03

FULL SCALE FIRE TEST: NFPA-286 Passed

To get the marked R-Value, it is essential that this insulation be installed properly. If you do it yourself, get instructions and follow them carefully. To obtain installation instructions please call 1-800-289-5693.

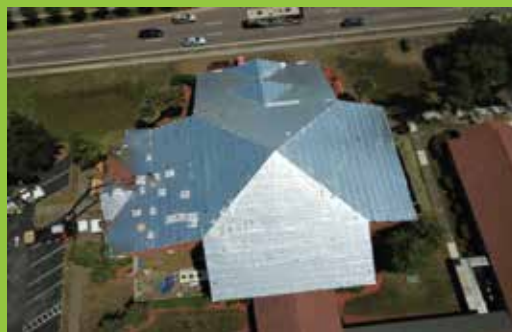
## The Multi-Purpose Solution For Your Insulation Needs!

### Discover Even More Ways To Lower Energy Costs With ESP Low-E® Insulation

#### Low-E Housewrap



#### Low-E ThermaSheet®



#### Low-E SlabShield®

