



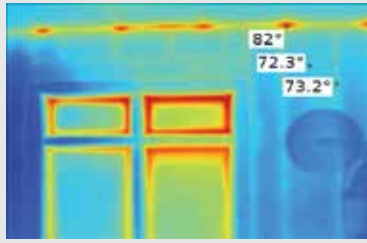
Isn't It Time Your House Wrap Did More?

- * Increases Energy Efficiency & Savings
- * Reflects Up To 97% Of Radiant Heat & Provides A Thermal Break
- * Adds R-Value To Wall System
- * Helps Meet IECC Code Without Switching To 2' x 6' Construction
- * Stops Thermal Bridging Through Sidewall Studs
- * Sound Attenuation Equal To 3" Of Fiberglass
- * Adds R-Value To Wall System
- * For Use Behind Most Any Exterior Cladding
- * Built In Overlap Means Full Five Square Coverage
- * Installs Like Any Traditional House Wrap
- * Used By Top Builders & Remodelers Nationwide
- * Improves Insulation System Performance

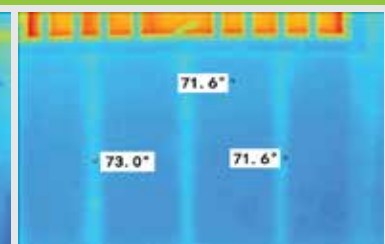
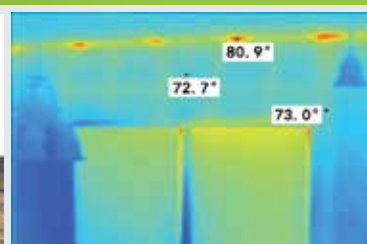
Save Energy. Save \$\$\$\$. Do More. With Less. Period.



House With Conventional House Wrap



House With Low-E Housewrap



Two Illinois homes built only 25 yards apart are virtually identical with one key difference. One was built with traditional house wrap and the other with Low-E Housewrap.

On an 85° summer day the North facing interior walls of both homes were photographed from inside with a heat measuring infrared camera. The images showed that very little summer heat penetrated either of the properly insulated walls.

The walls on the South side, where the sun shone directly on the house walls, told a different story. The wall protected by Low-E Housewrap all but stopped radiant heat transfer. The wall with traditional house wrap showed dramatic heat gain, absorbing heat and radiating it through the fiberglass insulation.

LOW-E HOUSEWRAP FEATURES & SPECIFICATIONS

PRODUCT CODES: 4PFNS, 5PFNS, 6PFNS

PRODUCT DIMENSIONS & DESCRIPTION: Single sided scrimmed aluminum foil laminated to polyethylene foam, perforated (1/4" nominal thickness)

WIDTH: 4', 5', 6' (with a 2" overlapping flange)

LENGTH: 125', 100', 100'

R-VALUE (Core Resistance): R-1.03

R-VALUE (Product & Reflective Airspace Only): R-3

SYSTEM R-VALUE*: R-4

PERM RATING: ASTM E96 7 or 40 grams/(day-m²)

WATER RESISTANCE: ASTM D779 9 hrs

* Horizontal heat flow: vinyl siding with a 0.375" reflective airspace & Low-E Housewrap attached to nominal thickness 1/2" wood sheathing.



Discover Even More Ways To Lower Energy Costs With ESP Low-E® Insulation



For more information please visit our website at www.low-e.com or call 1-800-BUY-LOWE (800-289-5693)