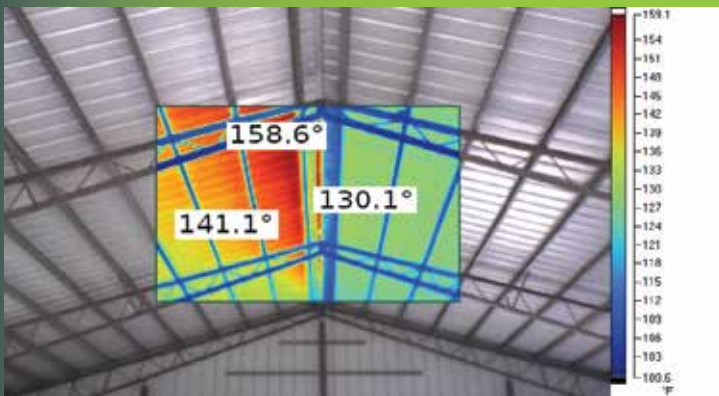




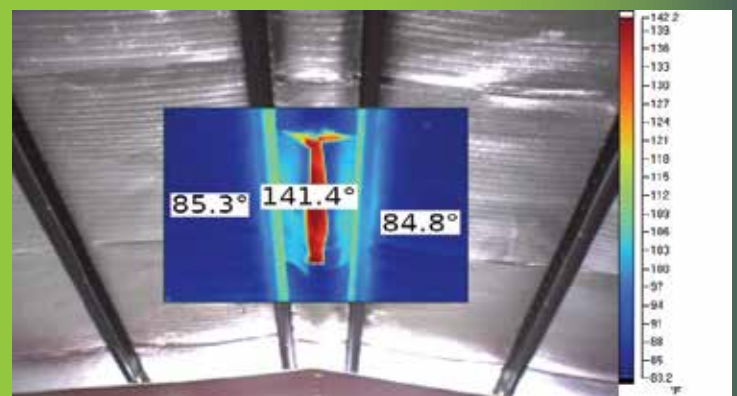
Low-E Metal Building & Post Frame Insulation



The High Quality, Long Lasting
Choice For Your Metal or
Post Frame Building



Thermal imaging picture of the roofline of a building without Low-E Insulation.



Thermal Imaging picture of the roofline of a building with Low-E Insulation. The Low-E Insulation has been cut and pulled open in the center to better show the temperature differential.

For more information please visit our website at www.low-e.com
or call 1-800-BUY-LOWE (800-289-5693)

LOW-E METAL BUILDING /POST FRAME INSULATION

FEATURES & SPECIFICATIONS



- * Increases Energy Savings & Reflects Up To 97% Of Radiant Heat
- * Pure Aluminum (Not Metalized Mylar) Facings WILL NOT Degrade Over Time
- * True 4' and 6' Coverage Means No Overlap Necessary
- * Polyethylene Foam Core Self Seals Around Fasteners
- * Indoor Air Quality Rated. No Glues, Non-Toxic, No Fiberglass, No Itching
- * Excellent Vapor Barrier. Also Available Perforated For High Performance Hybrid Insulation Systems
- * Bird, Insect, Mold & Mildew Resistant



Micro-E Insulation Low-E Peel & Stick

PRODUCT CODES: 4LMLT, 4LMLS, 4EMWS, 4LMWS, 4LMLS-PS, 6LMLS-PS, 4LMWS-PS, 6LMWS-PS

PRODUCT DIMENSIONS & DESCRIPTION: Double sided scrimmed, scrimmed foil / white foil, scrimless foil / white foil laminated to polyethylene foam (1/8" nominal thickness)
WIDTH: 4', 6'
LENGTH: 125'

EDGINGS AVAILABLE: Trimmed, Staple Flange, Peel & Stick, Class-A White Peel & Stick

R-VALUE*: Up to R-10
PERM RATING: ASTM E96 0.008
EMITTANCE: ASTM C1371 .03
FULL SCALE FIRE TEST: NFPA-286 Passed
FLAME & SMOKE: ASTM E84
FLAME SPREAD: <25
SMOKE DEVELOPED: <50

*R-Value results are obtained from ASTM C236

ESP Low-E® Insulation Low-E Staple Flange

PRODUCT CODES: 4LFLT, 4LFLS, 4FLZL, 5LFLT, 6LFLT, 6LFLS, 6LFLZ

PRODUCT DIMENSIONS & DESCRIPTION: Double sided scrimmed foil laminated to polyethylene foam (1/4" nominal thickness)

WIDTH: 4', 5', 6'
LENGTH: 125', 100, 84'

EDGINGS AVAILABLE: Trimmed, Staple Flange, EZ-Seal

R-VALUE*: Up to R-11
PERM RATING: ASTM E96 0.008
EMITTANCE: ASTM C1371 .03
FULL SCALE FIRE TEST: NFPA-286 Passed

*R-Value results are obtained from ASTM C236

Low-E Class-A White Insulation Low-E Class-A White EZ-Seal®

PRODUCT CODES: 4EFWT, 6EFWT, 4EFWS, 6EFWS, 4EFWZ, 6EFWZ

PRODUCT DIMENSIONS & DESCRIPTION: Scrimless foil/white foil laminated to polyethylene foam (1/4" nominal thickness)
WIDTH: 4', 6'
LENGTH: 125', 84'

EDGINGS AVAILABLE: Trimmed, Staple Flange, EZ-Seal

R-VALUE*: Up to R-11
PERM RATING: ASTM E96 0.008
EMITTANCE: ASTM C1371 .03
FULL SCALE FIRE TEST: NFPA-286 Passed
FLAME & SMOKE: ASTM E84
FLAME SPREAD: <25
SMOKE DEVELOPED: <50

*R-Value results were calculated by Geo-Science and were determined from 0.75" airspace and includes air film resistance.

Note: R-Values vary depending on facing and assembly. R-Values for specific applications can be obtained by contacting Environmentally Safe Products, Inc. at 1-800-289-5693.

