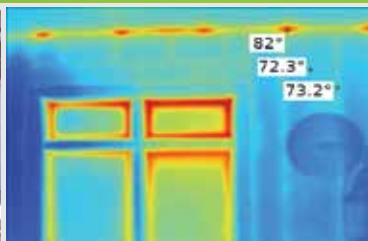


LOW-E 
HOUSE WRAP
 THERMAL WEATHER RESISTANT BARRIER

A Patented,
ICC Approved, Stand Alone,
Insulated House Wrap

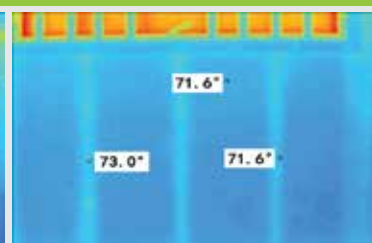
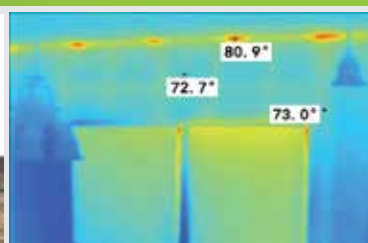


Isn't It Time Your House Wrap Did More?



Two Illinois homes built only 25 yards apart are virtually identical with one key difference. One was built with traditional house wrap and the other with Low-E Housewrap.

On an 85° summer day the North facing interior walls of both homes were photographed from inside with a heat measuring infrared camera. The images showed that very little summer heat penetrated either of the properly insulated walls.



The walls on the South side, where the sun shone directly on the house walls, told a different story. The wall protected by Low-E Housewrap all but stopped radiant heat transfer. The wall with traditional house wrap showed dramatic heat gain, absorbing heat and radiating it through the fiberglass insulation.

Save Energy. Save \$\$\$. Do More. With Less. Period.

For more information please visit our website at www.low-e.com
 or call 1-800-BUY-LOWE (800-289-5693)



ICC-ES Evaluation Report
 ESR-3079

U.S. Patent No.
 9,040,143

Most Widely Accepted and Trusted

LOW-E HOUSEWRAP FEATURES & SPECIFICATIONS



- * Year Round Comfort
- * Increases Energy Savings
- * Reflects Up To 97% Of Radiant Heat & Provides A Thermal Break
- * Adds R-Value To Wall System
- * Helps Meet IECC Code Without Switching To 2' x 6' Construction
- * For Use Behind Most Any Exterior Cladding
- * Built In Overlap Means Full Five Square Coverage
- * Installs Like Any Traditional House Wrap
- * Used By Top Builders & Remodelers Nationwide



PRODUCT CODES: 4PFNS, 5PFNS, 6PFNS

PRODUCT DIMENSIONS & DESCRIPTION: Single sided scrimmed aluminum foil laminated to polyethylene foam, perforated

WIDTH: 4', 5', 6' (with a 2" overlapping flange)

LENGTH: 125', 100', 100'

R-VALUE (CORE RESISTANCE): R-1.03

R-VALUE (PRODUCT & REFLECTIVE AIRSPACE ONLY): R-3

SYSTEM R-VALUE*: R-4

PERM RATING: ASTM E96 7 or 40 grams/(day·m²)

WATER RESISTANCE: ASTM D779 9 hrs

FULL SCALE FIRE TEST: (WALLS ONLY): NFPA-286 Passed

FLAME & SMOKE: ASTM E84 Flame Spread <25 Smoke Developed <50

* Horizontal heat flow: vinyl siding with a 0.375" reflective airspace & Low-E Housewrap attached to nominal thickness 1/2" wood sheathing.



Discover even more ways to lower energy costs with ESP Low-E® Insulation

