



Low-E Multi-Purpose Insulation



Garage Ceiling Under
An Office



Basement Wall
In-Cavity

High Quality Reflective Insulation For Everyday Use



Cathedral Ceiling



Crawl Space In-Cavity



Under Laminate
Flooring



Attic Rafter

Save Energy. Save \$\$\$. Do More. With Less. Period.

For more information please visit our website at www.low-e.com
or call 1-800-BUY-LOWE (800-289-5693)

LOW-E MULTI-PURPOSE INSULATION

FEATURES & SPECIFICATIONS

- * Reflects Up To 97% Of Radiant Heat
- * Excellent Vapor Barrier
- * Increases Energy Savings
- * Great For New Construction or Retro-Fit
- * Installs Easily With A Razor Knife & Foil Tape
- * For Use in Wall, Rafter, Crawlspace Applications, Under Laminate Flooring And Much More
- * Insect, Bird, Mold & Mildew Resistant
- * Can Be Used With Mass Insulation
- * Sound Deadener
- * Improves Insulation System Performance
- * Unique Pre-Crushed Tab Design For Easy Install

Micro-E Insulation®

PRODUCT CODES: 4LMLT, 4LMLS, 4EMWS, 4LMWS

PRODUCT DIMENSIONS & DESCRIPTION:

Double sided scrimmed, scrimmed foil / white foil, scrimless foil / white foil laminated to polyethylene foam (1/8" nominal thickness)

WIDTH: 4', 6'

LENGTH: 125'

EDGINGS AVAILABLE: Trimmed, Staple Fange

R-VALUE*: R-10 Down R-6 Up R-7 Horizontal

PERM RATING: ASTM E96 0.008

EMITTANCE: ASTM C1371 0.03

FULL SCALE FIRE TEST: NFPA-286 Passed

FLAME & SMOKE: ASTM E84

FLAME SPREAD: <25

SMOKE DEVELOPED: <50

*R-Value results are obtained from ASTM C236

ESP Low-E® Insulation

PRODUCT CODES: 4LFLT, 4FLS, 5LFLT, 6LFLT, 6LFLS 4EFWS, 6EFWS

PRODUCT DIMENSIONS & DESCRIPTION:

Double sided scrimmed foil, scrimless foil / white foil laminated to polyethylene foam (1/4" nominal thickness)

WIDTH: 4', 5', 6'

LENGTH: 125', 100, 84'

EDGINGS AVAILABLE: Trimmed, Staple Flange

R-VALUE*: R-11 Down R-7.55 Up

R-7.75 Horizontal

PERM RATING: ASTM E96 0.008

EMITTANCE: ASTM C1371 0.03

FULL SCALE FIRE TEST: NFPA-286 Passed

*R-Value results are obtained from ASTM C236

Low-E Tab Insulation

PRODUCT CODES: 16LFLC, 18LFLC, 24LFLC

PRODUCT DIMENSIONS & DESCRIPTION:

Double sided scrimmed aluminum foil laminated to polyethylene foam (1/4" nominal thickness)

WIDTH: 16", 18", 24"

LENGTH: 125' (16" & 24" widths), 100' (18" width)

EDGINGS AVAILABLE: Trimmed

R-VALUE*: R-11 Down R-7.55 Up

R-7.75 Horizontal

PERM RATING: ASTM E96 .008

EMITTANCE: ASTM C1371 0.03

FULL SCALE FIRE TEST: NFPA-286 Passed

FLAME & SMOKE: ASTM E84

FLAME SPREAD: <25

SMOKE DEVELOPED: <50

*R-Value results are obtained from ASTM C236

To get the marked R-Value, it is essential that this insulation be installed properly. If you do it yourself, get instructions and follow them carefully. To obtain installation instructions please call 1-800-289-5693.

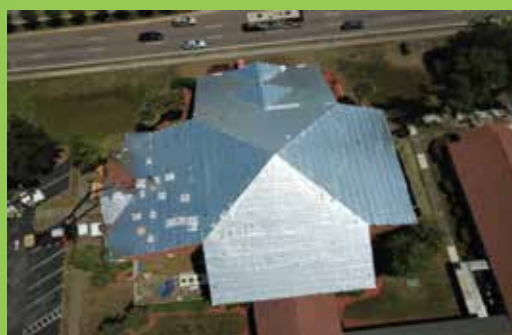
The Multi-Purpose Solution For Your Insulation Needs!

Discover even more ways to lower energy costs with ESP Low-E® Insulation

Low-E Housewrap



Low-E ThermaSheet®



Low-E SlabShield®

