

# ESP LOW-E

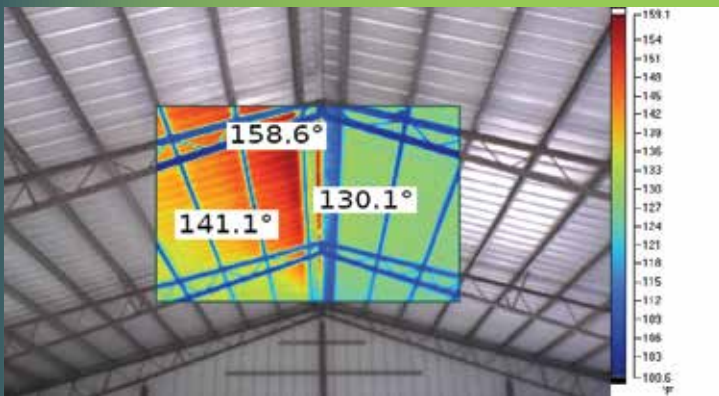
REFLECTIVE INSULATION  
INSULATION SOLUTIONS FOR OVER 25 YEARS



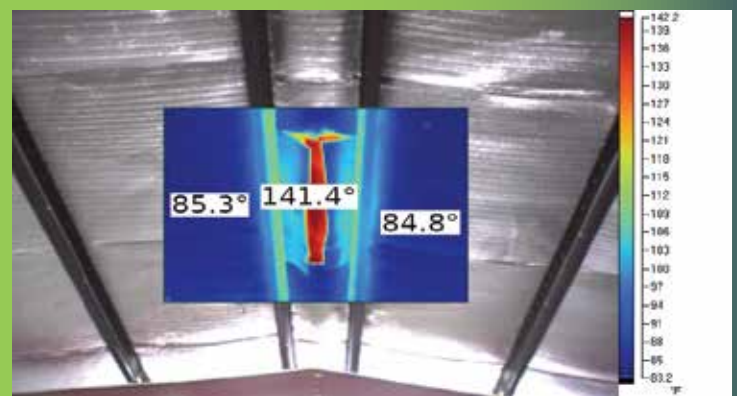
## Low-E Metal Building & Post Frame Insulation



The High Quality, Long Lasting  
Choice For Your Metal  
or Post Frame Building



Thermal imaging picture of the roofline of a building without Low-E Insulation.



Thermal Imaging picture of the roofline of a building with Low-E Insulation. The Low-E Insulation has been cut and pulled open in the center to better show the temperature differential.

For more information please visit our website at [www.low-e.com](http://www.low-e.com)  
or call 1-800-BUY-LOWE (800-289-5693)

# LOW-E METAL BUILDING /POST FRAME INSULATION

## FEATURES & SPECIFICATIONS



- \* Increases Energy Savings & Reflects Up To 97% Of Radiant Heat
- \* Pure Aluminum (Not Metalized Mylar) Facings WILL NOT Degrade Over Time
- \* True 4' and 6' Coverage Means No Overlap Necessary
- \* Polyethylene Foam Core Self Seals Around Fasteners
- \* Indoor Air Quality Rated. No Glues, Non-Toxic, No Fiberglass, No Itching
- \* Excellent Vapor Barrier. Also Available Perforated For High Performance Hybrid Insulation Systems
- \* Bird, Insect, Mold & Mildew Resistant



### Micro-E Insulation Low-E Peel & Stick

PRODUCT CODES: 4LMLT, 4LMLS, 4EMWS, 4LMWS, 4LMLS-PS, 6LMLS-PS, 4LMWS-PS, 6LMWS-PS

PRODUCT DIMENSIONS & DESCRIPTION: Double sided scrimmed, scrimmed foil / white foil, scrimless foil / white foil laminated to polyethylene foam (1/8" nominal thickness)

WIDTH: 4', 6'  
LENGTH: 125'

EDGINGS AVAILABLE: Trimmed, Staple Flange, Peel & Stick, Class-A White Peel & Stick

R-VALUE\*: Up to R-10  
PERM RATING: ASTM E96 0.008  
EMITTANCE: ASTM C1371 .03

FLAME & SMOKE: ASTM E84  
FLAME SPREAD: <25  
SMOKE DEVELOPED: <50

\*R-Value results are obtained from ASTM C236

### ESP Low-E® Insulation Low-E Staple Flange

PRODUCT CODES: 4LFLT, 4FLS, 4FLZ, 5LFLT, 6LFLT, 6FLS, 6FLZ

PRODUCT DIMENSIONS & DESCRIPTION: Double sided scrimmed foil laminated to polyethylene foam (1/4" nominal thickness)

WIDTH: 4', 5', 6'  
LENGTH: 125', 100, 84'

EDGINGS AVAILABLE: Trimmed, Staple Flange, EZ-Seal

R-VALUE\*: Up to R-11  
PERM RATING: ASTM E96 0.008  
EMITTANCE: ASTM C1371 .03

FULL SCALE FIRE TEST: NFPA-286 Passed  
FLAME & SMOKE: ASTM E84  
FLAME SPREAD: <25  
SMOKE DEVELOPED: <50

\*R-Value results are obtained from ASTM C236

### Low-E Class-A White Insulation Low-E Class-A White EZ-Seal®

PRODUCT CODES: 4EFTW, 6EFTW, 4EFS, 6EFS, 4EFWZ, 6EFWZ

PRODUCT DIMENSIONS & DESCRIPTION: Scrimless foil/white foil laminated to polyethylene foam (1/4" nominal thickness)

WIDTH: 4', 6'  
LENGTH: 125', 84'

EDGINGS AVAILABLE: Trimmed, Staple Flange, EZ-Seal

R-VALUE\*: Up to R-11  
PERM RATING: ASTM E96 0.008  
EMITTANCE: ASTM C1371 .03

FULL SCALE FIRE TEST: NFPA-286 Passed  
FLAME & SMOKE: ASTM E84  
FLAME SPREAD: <25  
SMOKE DEVELOPED: <50

\*R-Value results were calculated by Geo-Science and were determined from 0.75" airspace and includes air film resistance.

\* R-Values vary depending on facing and assembly. R-Values for specific applications can be obtained by contacting Environmentally Safe Products, Inc. at 1-800-289-5693.

