

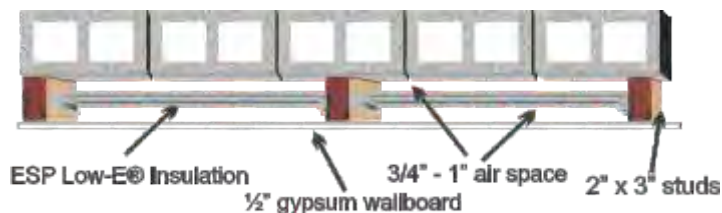
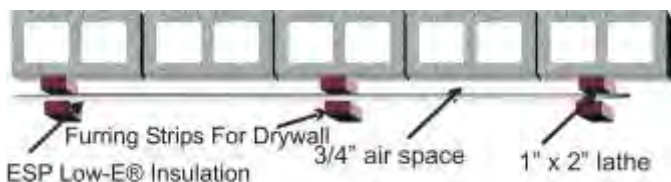
Basement/Block Wall - Crawl Space - Floor Joist Applications

Basement Wall Application

¹ System R-Value: R- 5.7 Horizontal Heat Flow Only

System R-Value: R- 8.12 Horizontal Heat Flow Only

Please note that these are two different applications with different R-values. Measure wall area to determine square footage of Low-E Insulation required (length x height). Roll out material and fasten as per diagram with 1/2" staples approximately every 6". To achieve a vapor barrier, all seams and stud faces must be taped securely with Low-E tape.



¹ SYSTEM R-VALUES FOR HORIZONTAL HEAT FLOW, WITH ONE ENCLOSED AIR SPACE, INCLUDES AN ADDITIONAL 1.70 STILL AIR FILM FOR EXPOSED SIDE OF ESP LOW-E®

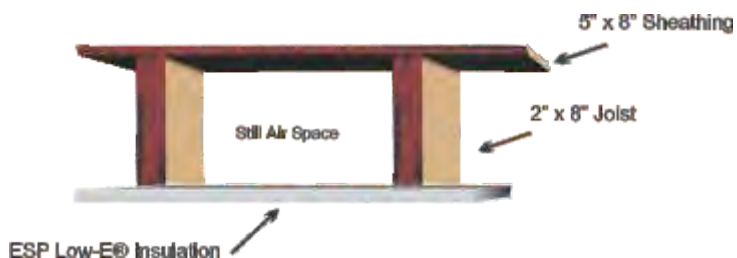
Crawl Space Application

² System R-Value: R- 20 Downward Heat Flow Only

ESP Low-E® can be used under your floor in a crawlspace to stop any air infiltration and add high insulating value to your floors. In a crawlspace application ESP Low-E® can achieve as high as an R-20. ESP Low-E® will not mold, mildew or absorb moisture, so once it's installed there is virtually no maintenance involved. In areas where flooding is a problem ESP Low-E® will eliminate the concern of your insulation system performing below average.

This Installation is for basement / crawlspaces with a 2" x 8" joist minimum. ESP Low-E® Insulation is installed across the bottom face of the joist. ALL R-VALUES ARE SYSTEM R-VALUES. AN ENCLOSED AIR SPACE MUST BE MAINTAINED TO ACHIEVE THESE VALUES. IF THE BOTTOM SURFACE OF THE LOW-E INSULATION MUST BE COVERED BY ANOTHER SURFACE, R-VALUE MAY BE LOWER.

Measure entire joist area to determine square footage of ESP Low-E® Insulation required (length x width). Roll out material and fasten to bottom of floor joist with 1/2" staples every 6". To achieve a vapor barrier, all seams must be taped securely with Low-E tape.

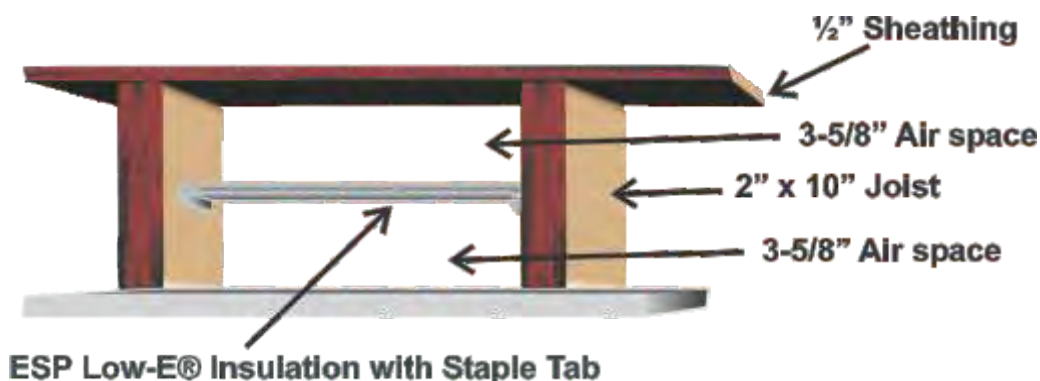


² SYSTEM R-VALUES FOR HEAT FLOW DOWN, WITH ONE ENCLOSED AIR SPACE, INCLUDES AN ADDITIONAL 4.55 STILL AIR FILM FOR EXPOSED SIDE OF ESP LOW-E®

Floor Joist Application

System R-Value: R- 20.20, Downward Heat Flow Only

Measure entire joist area to determine square footage of ESP Low-E® Insulation required (length x width). We recommend ESP Low-E® 16" or 24" tab material. Roll out material and fasten to inside of floor joist in the center of the cavity by stapling 3/4" tabs as per diagram to right with 1/2" staple every 6". To achieve a vapor barrier, all seams must be taped securely with Low-E tape.



SYSTEM R-VALUES FOR THESE INSTALLATION METHODS WERE CALCULATED USING DATA FROM THE 1989 ASHRAE HANDBOOK OF FUNDAMENTALS